

AI On-Prem Solution

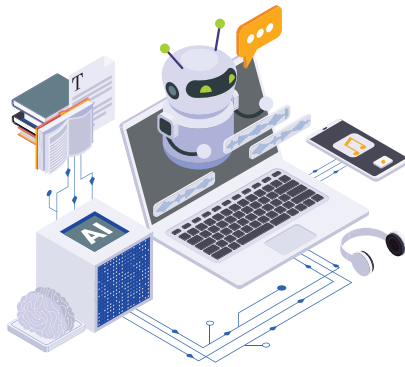


Unleash Next-Level On Prem Gen AI with Aetina MegaEdge AI Workstation and Qualcomm® Cloud AI 100 Ultra Card

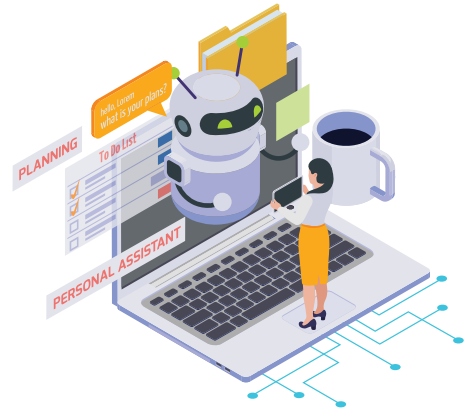
Aetina MegaEdge AIP-FR68 x86 AI workstation, featuring the Qualcomm® Cloud AI 100 Ultra inference card, delivers exceptional performance for generative AI inference, computer vision, and large language models (LLMs) up to 70B parameters at the nearest edge. This desktop, wall-mounted edge AI computing system supports real-time AI agents, workflow automation, and intelligent search, while ensuring that sensitive customer data, fine-tuned models, and inference loads remain on premises—securely and with low-latency processing. It also offers industry-leading power efficiency and a superior total cost of ownership.



RAG-enabled AI Chatbots



AI Agents

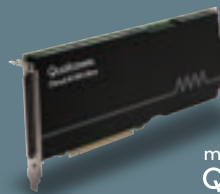


AI Workflow Automation

What's in the Solution?



Aetina MegaEdge AI Inference/ Training System AIP-FR68



made with
Qualcomm
Technologies

Qualcomm Cloud AI 100 Ultra Inference Card

- Optimized performance up to **870 TOPS** for gen AI & computer vision workloads
- Enterprise-class AI processing in a desktop form factor
- Real-time analytics with sub-millisecond latency
- Comprehensive support for diverse AI frameworks

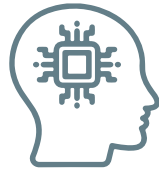
Turbocharge Your Edge AI Operations with AI On-Prem Solution

Enterprises grapple with deploying secure, high-performance AI solutions on-premises, particularly for demanding workloads like generative AI and computer vision. Data privacy and latency concerns further complicate these deployments. Aetina addresses these challenges with collaboration between Aetina and Qualcomm Technologies to deliver an innovative on-prem AI solution tailored for enterprises and industries.

The Aetina MegaEdge AIP-FR68 integrates Qualcomm® Cloud AI 100 Ultra cards, which offer up to 870 TOPS of AI performance at 8-bit integer (INT8) while consuming only 150W per card. With support for dual cards in a single desktop workstation, this system provides enterprise-grade AI capabilities in a compact and energy-efficient form factor.



On-Premise AI Processing



Superior AI Performance On a Single Platform



Ready-for-Use AI Inference Tools



Real-Time AI Analytics

AI On-Prem Computing Duo

Edge AI Inference/Training System



Aetina MegaEdge AIP-FR68

- Intel 13/14th Gen Core™ i9/i7/i5 Processor, TDP up to 65W
- Support dual passive Qualcomm Cloud AI 100 Ultra cards
- 4x 2.5" SATAIII SSD, supporting RAID configurations
- 2x M.2 2280 M-Key slots, supporting Gen4 x4NVMe
- 1x 10G Ethernet and 3x 2.5G RJ-45 Ethernet
- Built-in Out-of-Band (OOB) module to execute remote maintenance

AI Inference Card



made with
Qualcomm
Technologies

Qualcomm Cloud AI 100 Ultra

- PCIe FH3/4L, Single slot
- Support 870 TOPS ML capacity (INT8)
- PCIe Gen4 x16
- 128GB on board DRAM (with ECC)
- 548GB/s memory bandwidth
- 150W power consumption
- 64 AI cores on single card

Accelerate your AI Deployment with Local AI Services

Aetina's expertise in industrial computing joins forces with Qualcomm Technologies' cutting-edge inference accelerators and advanced software stack, including the Qualcomm® AI Inference Suite—featuring ready-to-use AI applications, tools, and libraries for scaling generative AI. This powerful AI On-Prem Solution supports a wide range of local AI services, from computer vision to generative AI, offering capabilities such as OpenAI-compatible APIs with user management, voice agents in-a-box, and offloading of large language model (LLM) and retrieval-augmented generation (RAG) functions for intelligent indexed search, summarization, image and code generation, and camera processing.

- AI agents
- RAG
- Transcription & Translation
- Code development
- Chatbots
- Text-to-images



Transforming Industries Through Gen AI Innovation



Security

Smart Factories

Smart Cities

Retail

Warehouses

Specifications



made with
Qualcomm
Technologies

Model Number	AIP-FR68-A1
CPU	13/14th Gen. Intel® Core™ i9/i7/i5 Processor up to 65W
Graphics	Intel® UHD Graphics 770
Chipset	Intel® R680E Chipset
System Memory	4 x DDR5 288-pin U-DIMM up to 192G
Storage	4 x 2.5" SATAIII SSD (RAID 0/1/5/10) 1 x M.2 M-Key Slot, Support PCIe Gen4 x4 for NVME/SATA, Size 2280 1 x M.2 M-Key Slot, Support PCIe Gen4 x4 for NVME, Size 2280
USB	8 x USB 3.2 Gen2 x 1 (Type-A) 1 x USB 3.2 Gen2 x 2 (Type-C)
LAN	3 x 2.5G RJ-45 Ethernet (I226-LM, LAN2/LAN3 optional with 802.3at PSE up to 30W/ch) 1 x 10G BASE-T RJ-45 (Marvell AQCN113)
Serial port	1 x RS-485 (COM3, RJ45) 2 x RS-232/422/485 (COM1/2, DB9, Default RS-232)
Display	1 x HDMI 2.0 2 x DP++ 1.4 (VGA optional / GPIO either one)
Expansion Slots	1x M.2 E-Key 2230 (USB2.0/PCIe) 1x M.2 B-Key 3052(USB2.0/USB3.2) 1x PCIe Gen4 x16 or Gen4 x8 (PCIe x16 slot) 1x PCIe Gen4 x8 (PCIe x16 slot) 1x PCIe Gen3 x4 (PCIe x4 slot) 1x PCIe Gen3 x4 (PCIe x16 slot) 1x PCIe Gen3 x1 (PCIe x1 slot)
SIM Slot	1 x Nano SIM slot
GPIO	8 x bits GPIO
Audio	1 x Line-out, 1 x Mic-in
Button	1 x Power button 1 x AI button
Indicator	PCIe Slot-1&2 (POWER/FAN/TEMP)
MISC. Function	OOB (out of band), Built-in Innodisk – InnoAgent
Power Consumption	Full loading : up to 600 Watts
Power Input / Connector	DC-in 24~48V (Power input up to 600W) , 4-pin Terminal Block
Dimension (Wx Dx H)	340 x 215 x 279 mm
Mounting	Wall mount / Desk mount
Net Weight	11 kg
Vibration	1Grms ,IEC60068-2-64,Random,5 ~ 500 Hz ,1Hr / Axis (operation, w/o PCIe Card)
Shock	10G, IEC 60068-2-27, Half Sine, 11 ms Duration (operation, w/o PCIe Card)
Temperature	Operating Temp.: 0°C ~ +40°C (32°F ~ 104°F) Storage Temp.: -40°C ~ +85°C (- 40°F ~ 185°F)
Humidity	95% @ 40°C Related Humidity, Non-condensing
OS Support	Ubuntu 22.04 / 24.04
Security	TPM 2.0
Certification	CE / FCC Class A / UKCA / LVD / RoHS / BIS